

HAUS B2

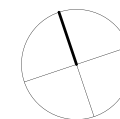
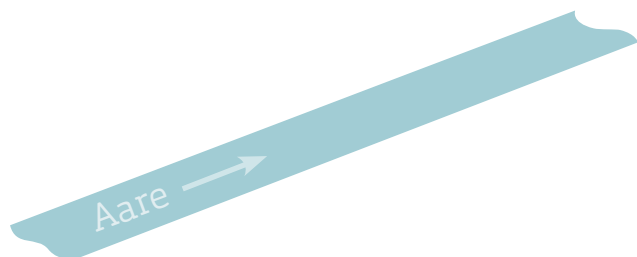
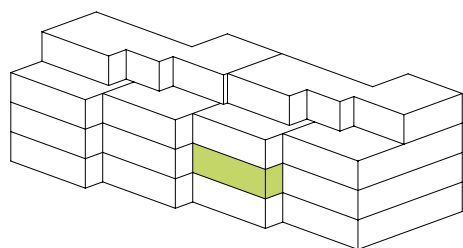
1.OG WOHNUNG B2.11

Wohnungs-Nummer:	B2.11
Etage:	1. OG
Anzahl Zimmer:	3 1/2
Nettowohnfläche:	87.8 m ²
Aussenfläche:	17.4 m ²
Keller:	8.9 m ²
Nettomiete:	CHF 1'490
Nebenkosten:	CHF 200

OPTIONAL

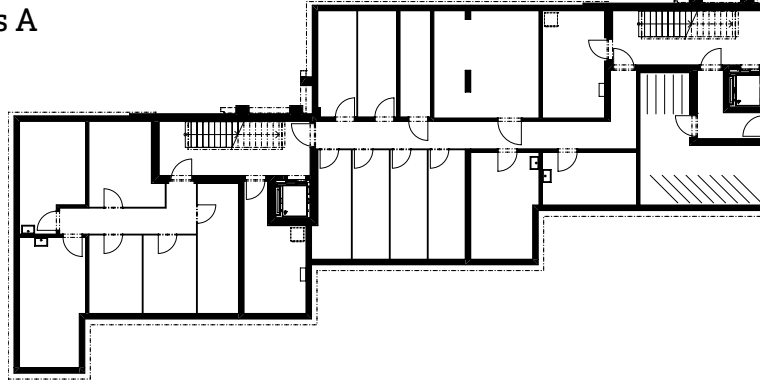
Bastelraum

B2-BR1:	14.9 m ²	CHF 100
B2-BR2:	14.5 m ²	CHF 100
Einstellhallenplatz		CHF 130

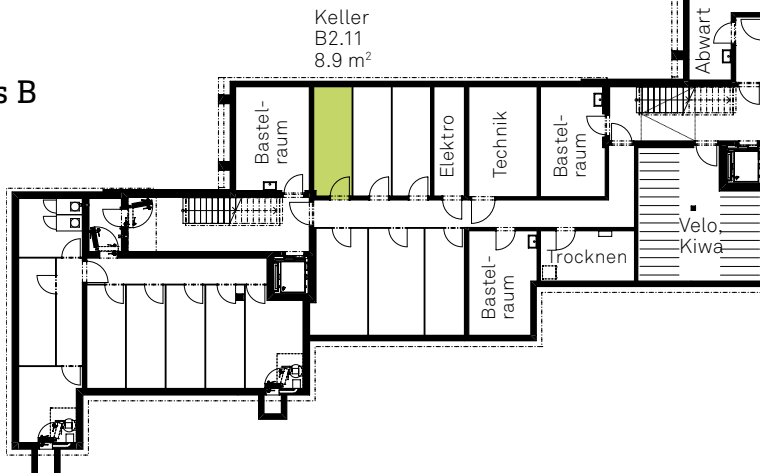


EINSTELLHALLE

Haus A



Haus B



Haus C

Haus D

